



Queenswood Court, Kings Avenue, SW4

2 bedroom flat to let

£566 Per Week

Part furnished

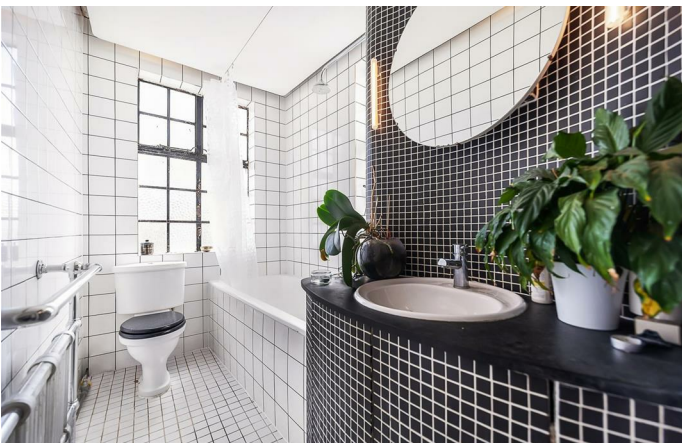
Property Details

A stunning , spacious and bright two bedroom flat in beautiful period mansion block - situated around a twenty minute walk from both Brixton and Herne Hill stations. This lovely flat comprises a large reception space leading off into a hallway , a kitchen, two generous double bedroom and a sleek family sized bathroom. Living here , you will be a walk away from the buzz of vibrant Clapham high street and popular Clapham Common.

Features

- 2 Double bedrooms
- Good transport links
- Close to Clapham common
- Light and airy
- Period building

Council tax band E EPC rating E (54)



Queenswood Court, Kings Avenue, SW4

K

2 Bedroom Flat

Approx internal area:

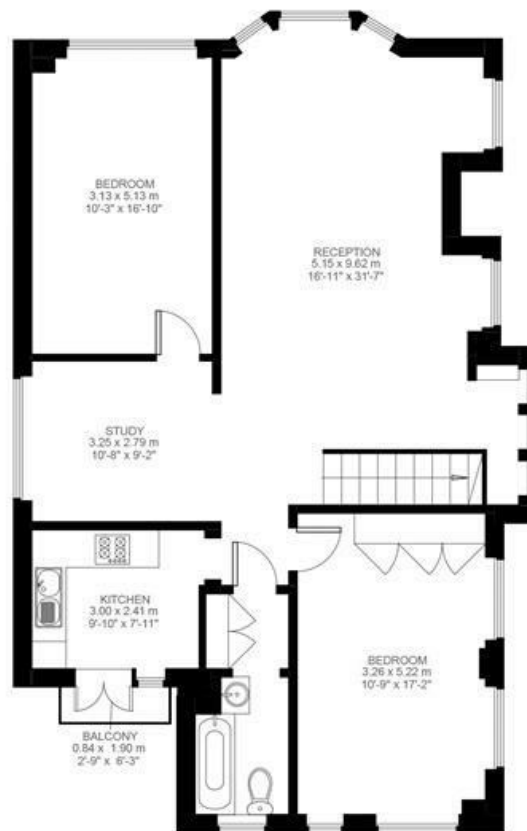
1084 sqft 101 sqm

While we do try our very best, floor plans are produced as a guide only and we take no responsibility for the precise accuracy with which any property is represented

Kings Avenue



Third Floor



Fourth Floor



Queenswood Court, Kings Avenue, SW4

